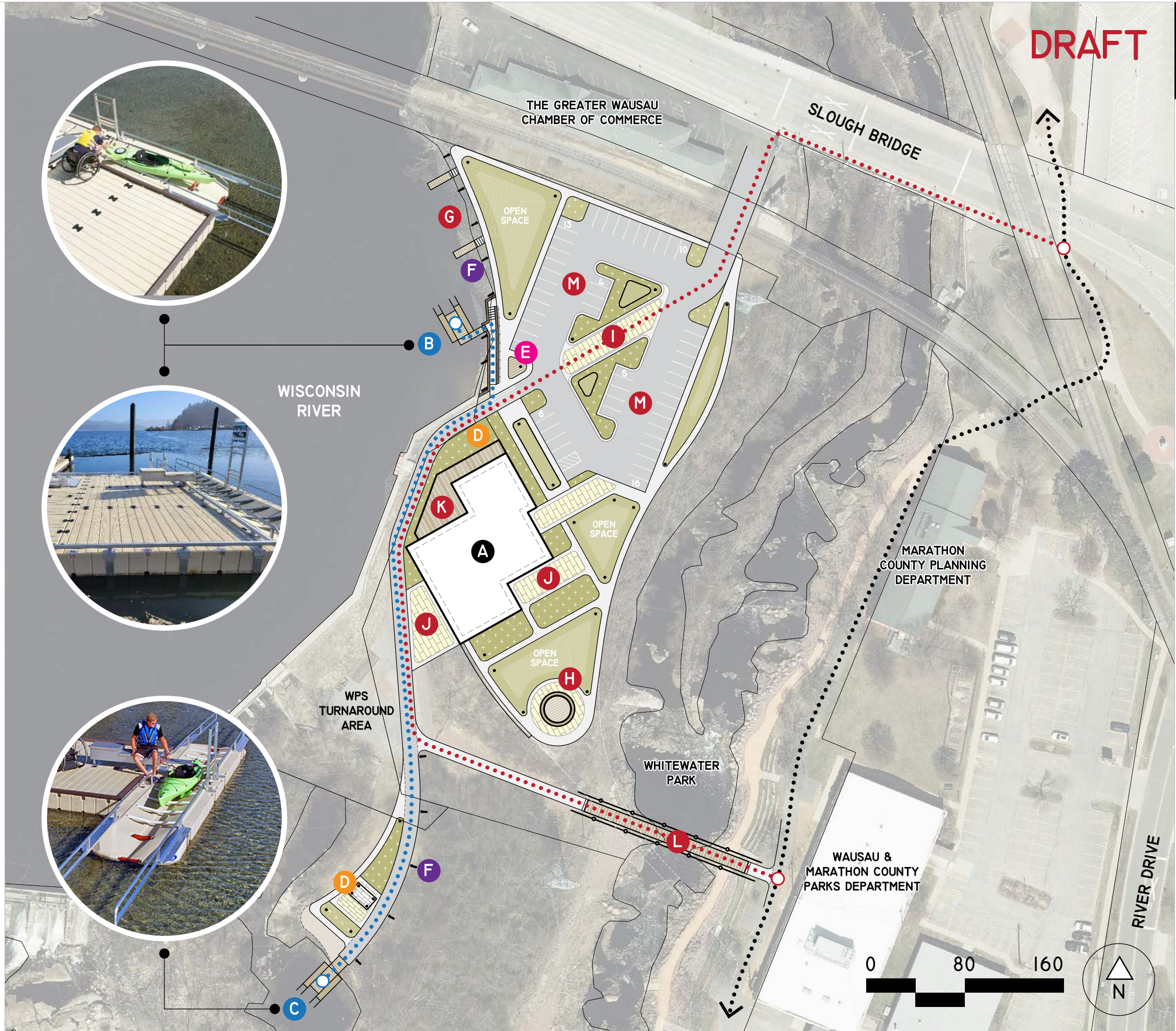


LEGEND

- PORTAGE ROUTE
- MULTI-USE PATH ROUTE
- EXISTING MULTI-USE PATH

- A** POWERHOUSE BUILDING
- FUTURE EVENT CENTER
- B** CANOE/KAYAK UPPER PIER
- LOW STONE BLOCK RETAINING/SEATING
- RAMP AND STAIR TRANSITION TO PATH
- C** CANOE/KAYAK LOWER PIER
- SHALLOW SAND/GRAVEL BEACH
- D** CANOE/KAYAK STORAGE
- TEMPORARY STORAGE/LOCKING AREA
AND OVERHEAD SHELTER
- E** REPAIR STATION
- TOOLS & TIRE PUMP STATION
- F** HISTORIC IMAGES/ART
- STEEL FABRICATION WITH BW PRINTING
- HISTORIC PHOTOS OF CLARK ISLAND
WATERFRONT
- NATIVE AMERICAN HISTORY
- EDUCATIONAL OPPORTUNITY
- G** SITTING/FISHING PIERS
- ADDITIONAL OPPORTUNITY TO ACCESS
/EXPERIENCE WATERFRONT
- H** STAGE/PERFORMANCE AREA
- OUTDOOR ENTERTAINMENT
- SMALL/RAISED PLATFORM WITH
ADJACENT GATHERING AREA
- HIGH POINT OF ISLAND WITH VIEWS
FROM WHITEWATER PARK
- I** WOONERF/SHARED SPACE
- MULTIFUNCTIONAL SPACE TO ALLOW
PEDESTRIAN ACCESS AS WELL AS WPS
VEHICLES THROUGH PARKING AREA
- J** OUTDOOR PATIO
- MOVABLE CHAIRS & TABLES
- PATIO LIGHTING
- K** DECK OVERLOOKING
WATERFRONT
- L** PEDESTRIAN BRIDGE
- M** SURFACE PARKING
- 54 STALLS



DRAFT



WWW.REIENGINEERING.COM
715 • 675 • 9784

4080 N 2TH AVE
WAUSAU, WI, 54401

THIS EXHIBIT IS INTENDED
FOR CONCEPTUAL PURPOSES ONLY
- NOT FOR CONSTRUCTION -

CLARK ISLAND PORTAGE

PRELIMINARY CONCEPT PLAN

WAUSAU,
WISCONSIN

07.21.2023

PROJECT NUMBER • 9787A

PI00